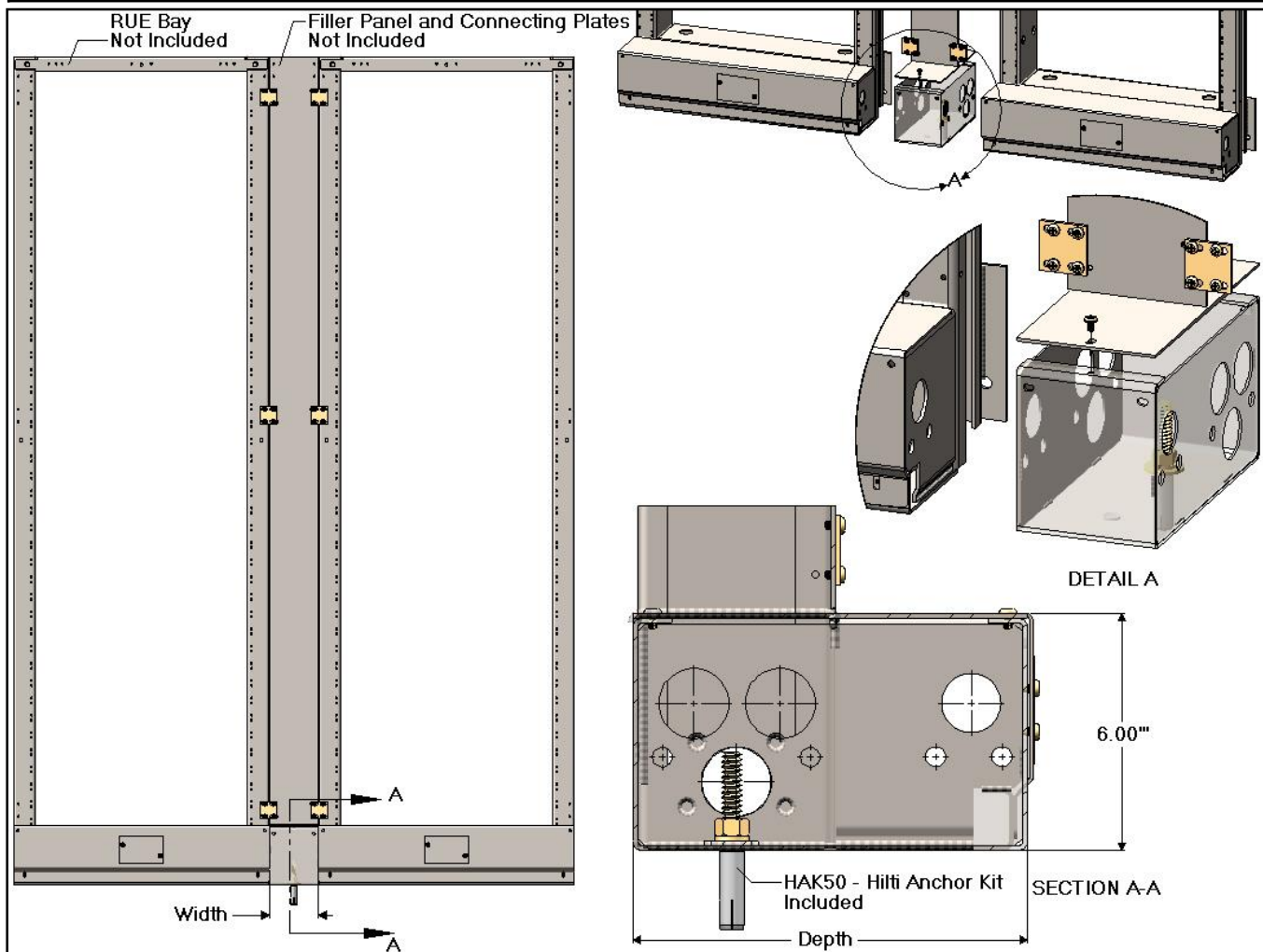




BFU Series - Unequal Flange Base Filler w/ Sides



BFU Series Unequal Flange Base Filler w/ Sides		
CSF P/N#	Width	Depth
BFU2510xx	2.50"	10.00"
BFU2512xx	2.50"	12.00"
BFU2515xx	2.50"	15.00"
BFU5010xx	5.00"	10.00"
BFU5012xx	5.00"	12.00"
BFU5015xx	5.00"	15.00"
BFU7512xx	7.50"	12.00"
BFU7515xx	7.50"	15.00"
BFU1012xx	10.00"	12.00"
BFU1015xx	10.00"	15.00"

HAK50 - Hilti Anchor Kit for Base Filler			
Item	CSF P/N#	QTY	Description
1	TR29	1	1/2-13 Threaded Rod x 3.25" Lg.
2	HN147	1	1/2-13 Hex Nut
3	LW157	1	1/2" Spring Lock Washer
4	FW167	1	1/2" Flat Washer
5	HL336427	1	Hilti HDI 1/2" Drop In Anchor
6	PH0401FST	2	12-24 x 3/8" Lg. PH Phil Cutting
7	FW168	1	5/8" Flat Washer [Not Shown]

- Notes:
- Kit includes all mounting hardware, Base Filler unit and cover.
 - BFUxx10xx [10.00" Depth] does not include HAK50.
 - If no Filler Panel is used add a "K" to the end of the Part Number above to receive [R5xxZY] connection plates.
 - Other Sizes available upon request.

Specifications subject to change. Please contact CSF Customer Service for more information.